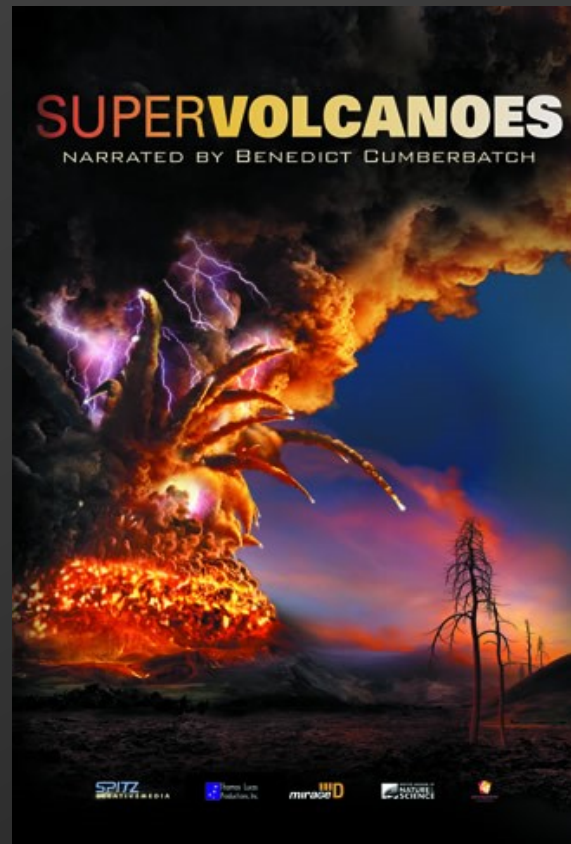


# FULLDOME SHOWS



## ***SUPER VOLCANOES***

The scene was 70,000 years ago, on the island of Sumatra. A chain of events that began as a small volcanic eruptions would build, until a vast regional plateau literally collapsed in on itself. Toba was one of the largest volcanic eruptions known in Earth's long history, but it was by no means the largest. A far larger type of eruption draws upon immense reservoirs of magma that rise up toward the surface. One of them, in what's now Russian Siberia, sent lava flowing over an area the size of the United States. By the time it was over, up to 90% of all life on Earth had vanished.

Supervolcanoes is an immersive planetarium show that looks back at rare classes of eruptions that have marshaled the energy that lurks, like a sleeping dragon, beneath the surface of planet Earth. The program moves beyond Earth to explore the impact of giant volcanic eruptions around our solar system. Audiences will fly down to Neptune's frigid moon Triton, and the ultimate volcanic world: Jupiter's moon Io. On a visit to a legendary North American hot spot, Yellowstone National Park, the film asks: can a supervolcano erupt in our time?

Spitz Creative Media, Mirage 3D, Thomas Lucas Productions, in association with Denver Museum of Nature & Science

**Subject: Earth Science**

**Suitable for ages 9+, general public and school groups**

**Running Time: 24 minutes | Languages: Arabic, English**

**Release Date: 2012**

To watch trailer: click [here](#).